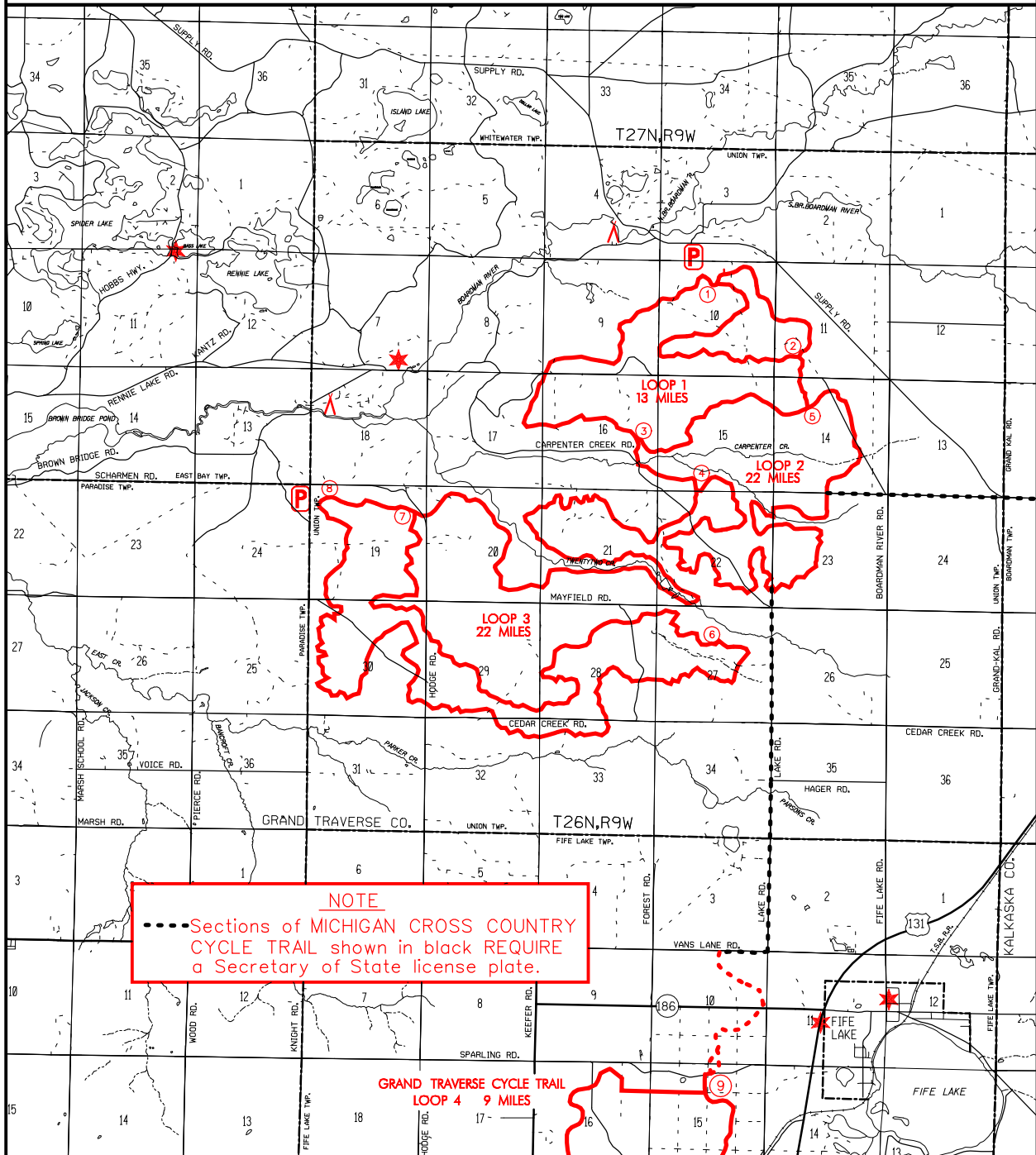


GRAND TRAVERSE MOTORCYCLE TRAIL (north)

GRAND TRAVERSE COUNTY

FOREST MANAGEMENT DIVISION



	<p> ORV TRAIL - for ORV's less than 50" in width-off road motorcycles and/or ATV's. (DNR license required)</p> <p> ORV ROUTE - for ORV's of all sizes. (DNR license required unless licensed by Secretary of State)</p> <p> MICHIGAN CROSS COUNTRY CYCLE TRAIL (Sections require DNR license and Secretary of State license)</p>	<p>LEGEND</p> <p> INTERSECTION NUMBER</p> <p> PARKING</p> <p> CAMPGROUND</p> <p> GAS - FOOD</p> <p> 0 .5 1 SCALE IN MILES</p>	<p>LOCATION</p> <p>FEBRUARY 1999</p>	
--	--	--	---	--

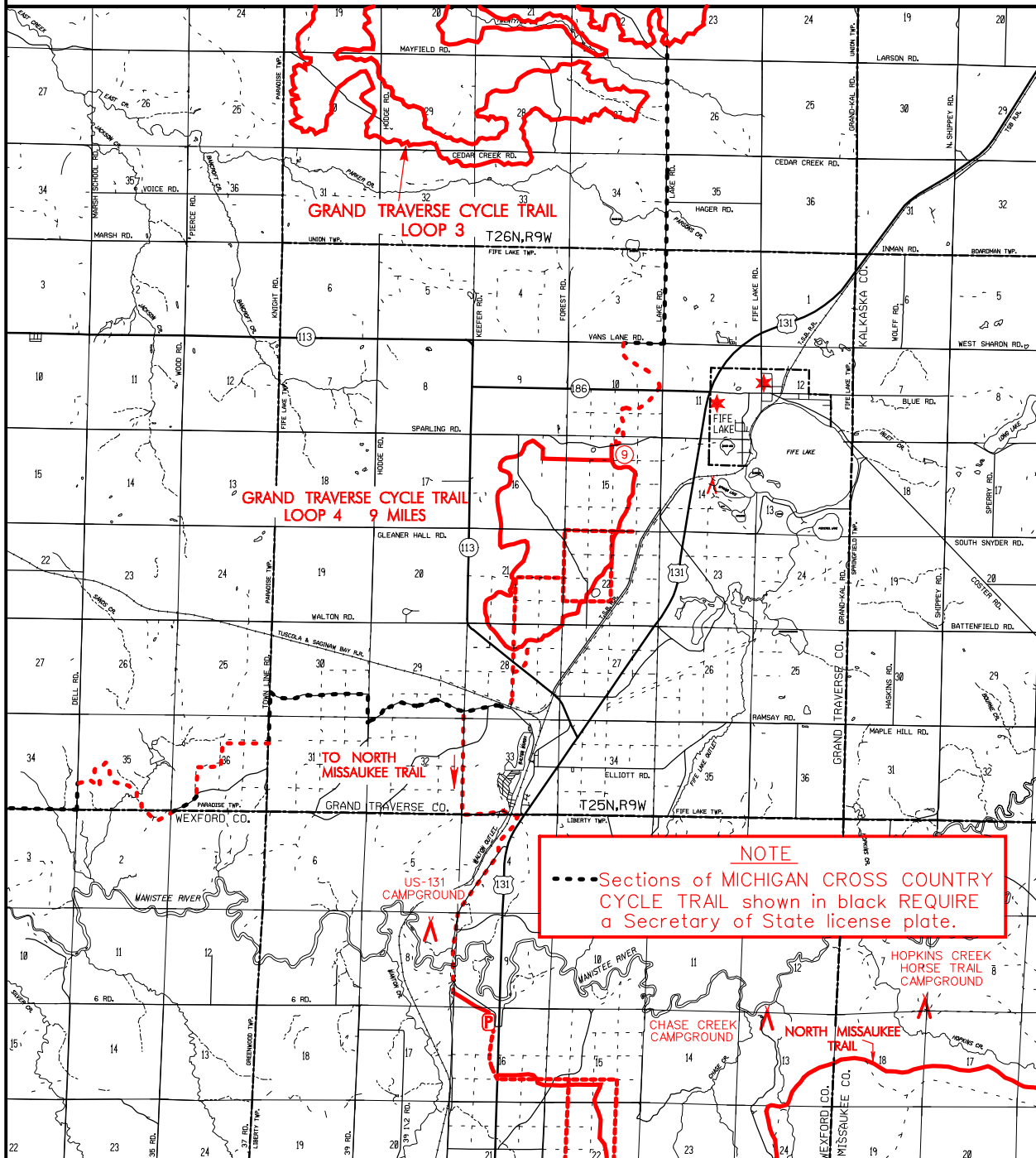
ADVISORY: Trails and Routes have two-way traffic.

DISCLAIMER: Trails shown on this map are an approximate representation of the trail system at the time of publication and may not reflect current ground conditions. **STAY ON SIGNED TRAILS ONLY!**

GRAND TRAVERSE MOTORCYCLE TRAIL (south)

GRAND TRAVERSE, WEXFORD, AND MISSAUKEE COUNTIES

FOREST MANAGEMENT DIVISION



NOTE
 - - - Sections of MICHIGAN CROSS COUNTRY CYCLE TRAIL shown in black REQUIRE a Secretary of State license plate.

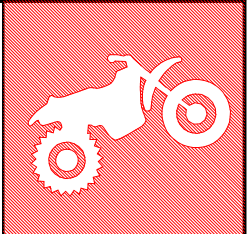


- ORV TRAIL - for ORV's less than 50" in width-off road motorcycles and/or ATV's. (DNR license required)
- ORV ROUTE - for ORV's of all sizes. (DNR license required unless licensed by Secretary of State)
- MICHIGAN CROSS COUNTRY CYCLE TRAIL (Sections require DNR license and Secretary of State license)

- LEGEND**
- INTERSECTION NUMBER
 - PARKING
 - CAMPGROUND
 - GAS - FOOD
- 0 .5 1
SCALE IN MILES

LOCATION

FEBRUARY 1999



ADVISORY: Trails and Routes have two-way traffic.

DISCLAIMER: Trails shown on this map are an approximate representation of the trail system at the time of publication and may not reflect current ground conditions. **STAY ON SIGNED TRAILS ONLY!**