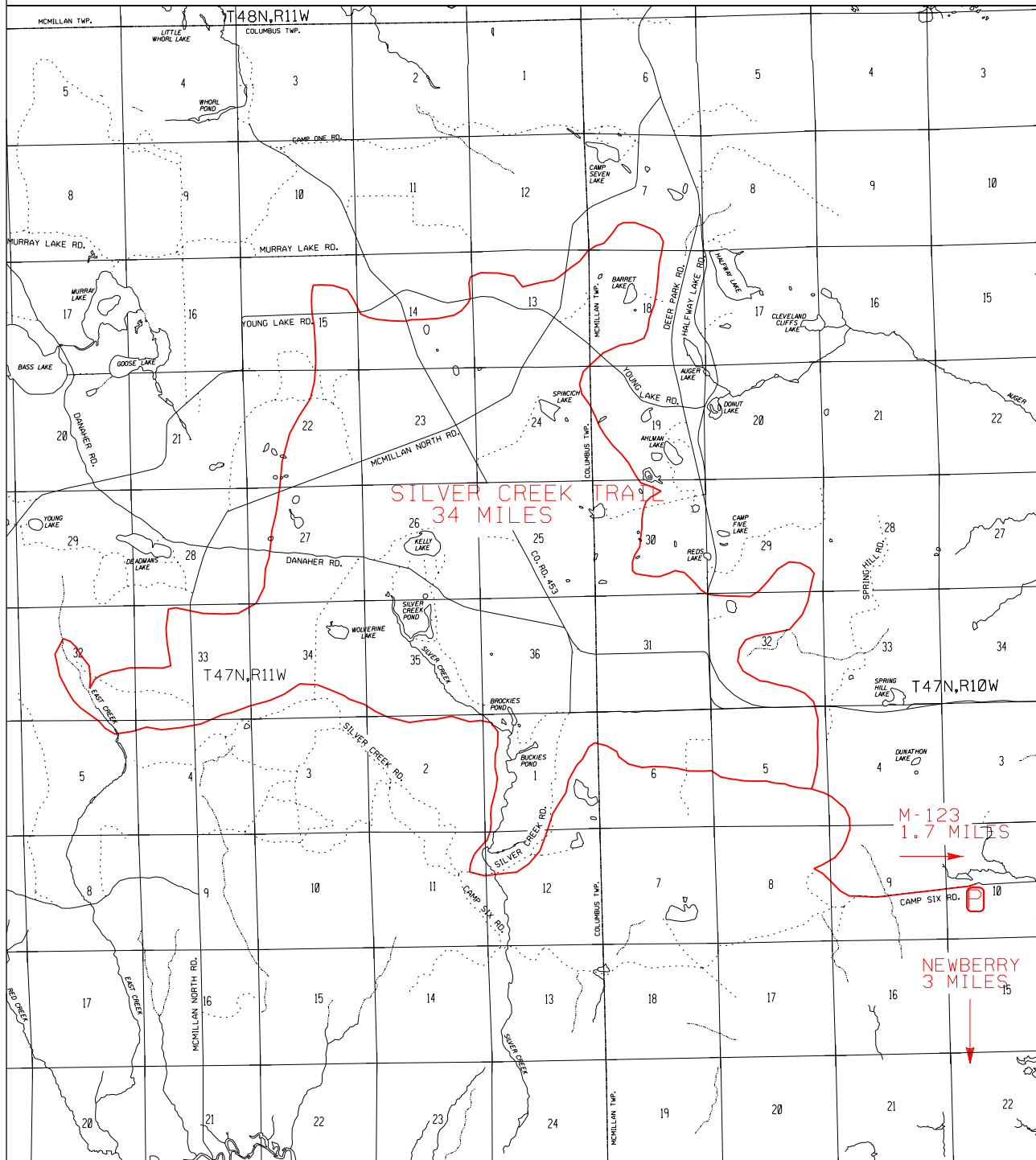


SILVER CREEK MOTORCYCLE TRAIL

LUCE COUNTY
FOREST MANAGEMENT DIVISION



- ORV TRAIL - for ORV's less than 50" in width-off road motorcycles. (DNR license required)
- ORV ROUTE - for ORV's of all sizes. (DNR license required unless licensed by Secretary of State)

LEGEND

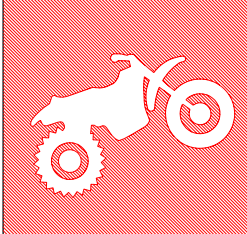
- PARKING
- CAMPGROUND
- GAS - FOOD

X

0 .5 1
SCALE IN MILES

LOCATION

MAY 2005

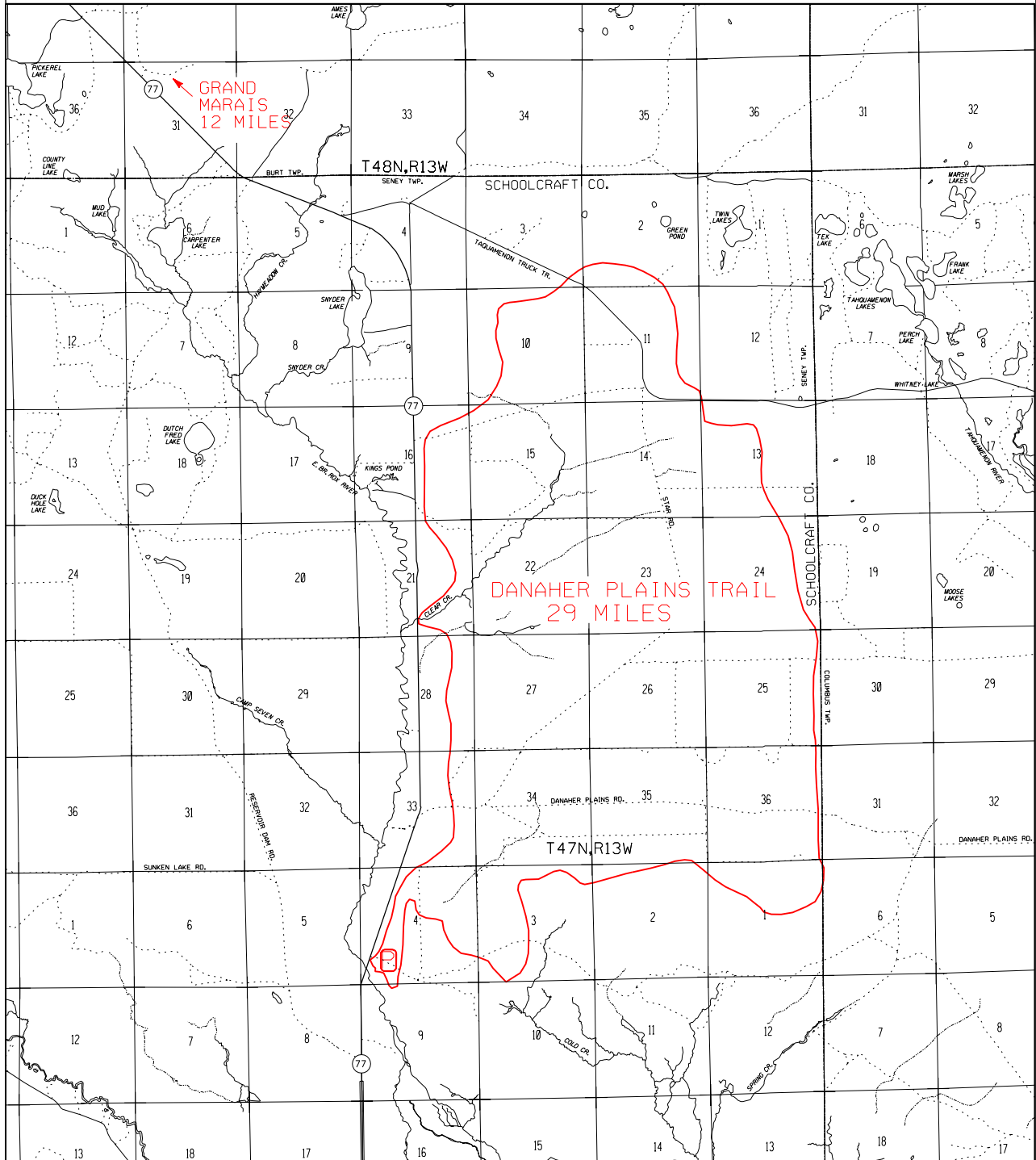




ADVISORY: Trails and Routes have two-way traffic.

DISCLAIMER: Trails shown on this map are an approximate representation of the trail system at the time of publication and may not reflect current ground conditions. **STAY ON SIGNED TRAILS ONLY!**


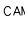
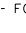
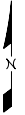
DANAHER PLAINS TRAIL

SCHOOLCRAFT AND LUCE COUNTIES
FOREST MANAGEMENT DIVISION



-  ORV TRAIL-for ORV's less than 50" in width-off road motorcycles and ATVs. (DNR license required)
-  ORV ROUTE-for ORV's of all sizes. (DNR license required unless licensed by Secretary of State)

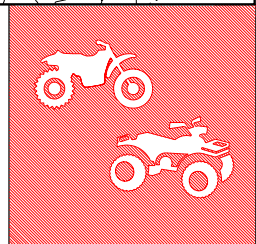
LEGEND

-  PARKING
 -  CAMPGROUND
 -  GAS - FOOD
- 
0 .5 1
SCALE IN MILES

LOCATION



MAY 2005



ADVISORY: Trails and Routes have two-way traffic.

DISCLAIMER: Trails shown on this map are an approximate representation of the trail system at the time of publication and may not reflect current ground conditions. STAY ON SIGNED TRAILS ONLY!