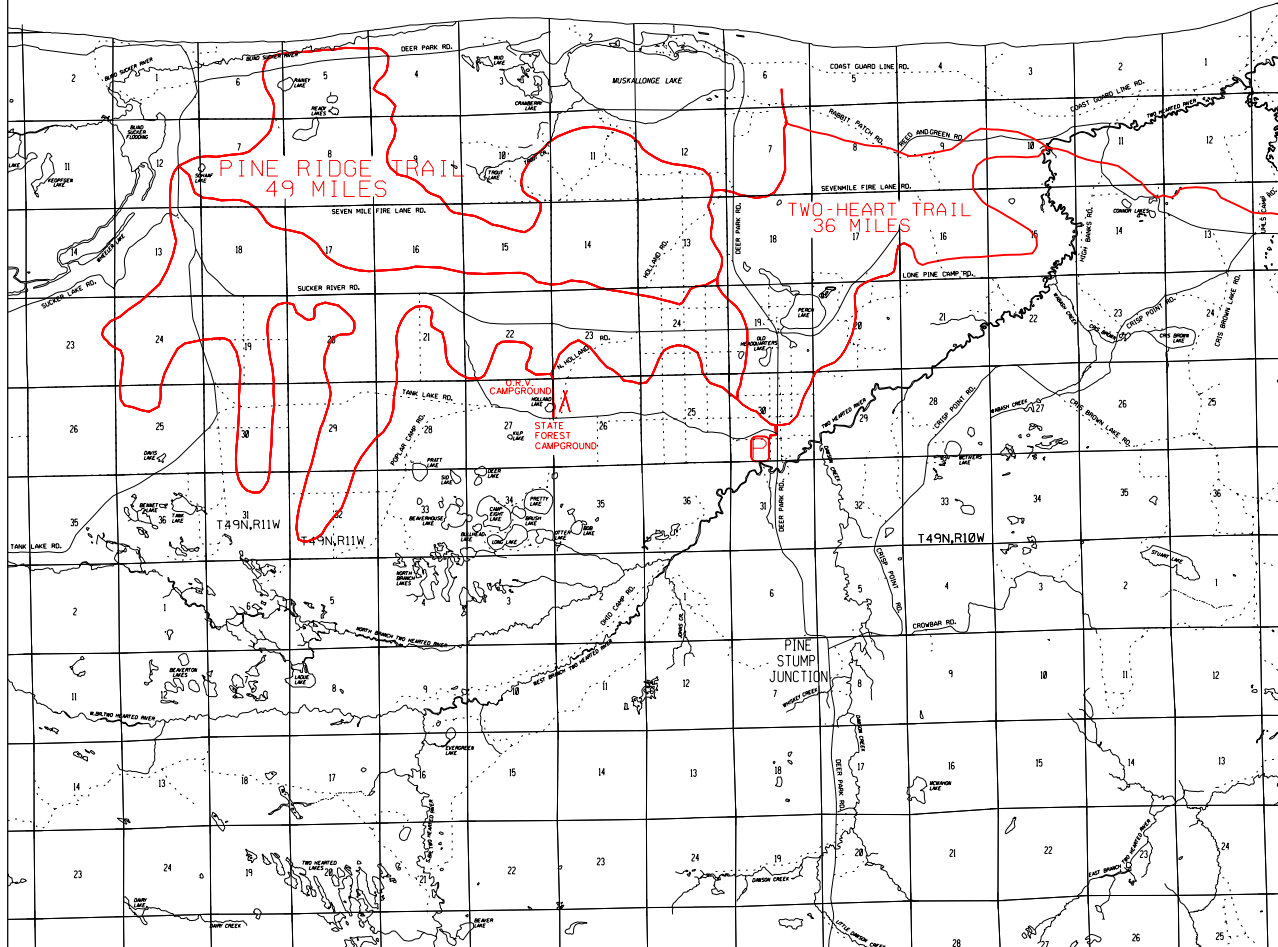




PINE RIDGE TRAIL





LUCE COUNTY
FOREST MANAGEMENT DIVISION

LAKE SUPERIOR

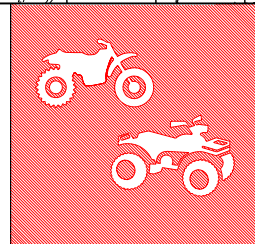


-  ORV TRAIL - for ORV's less than 50" in width-off road motorcycles and ATV's. (DNR license required)
-  ORV ROUTE - for ORV's of all sizes. (DNR license required unless licensed by Secretary of State)

LEGEND

-  PARKING
-  CAMPGROUND
-  GAS - FOOD
-  0 5 1
SCALE IN MILES

LOCATION

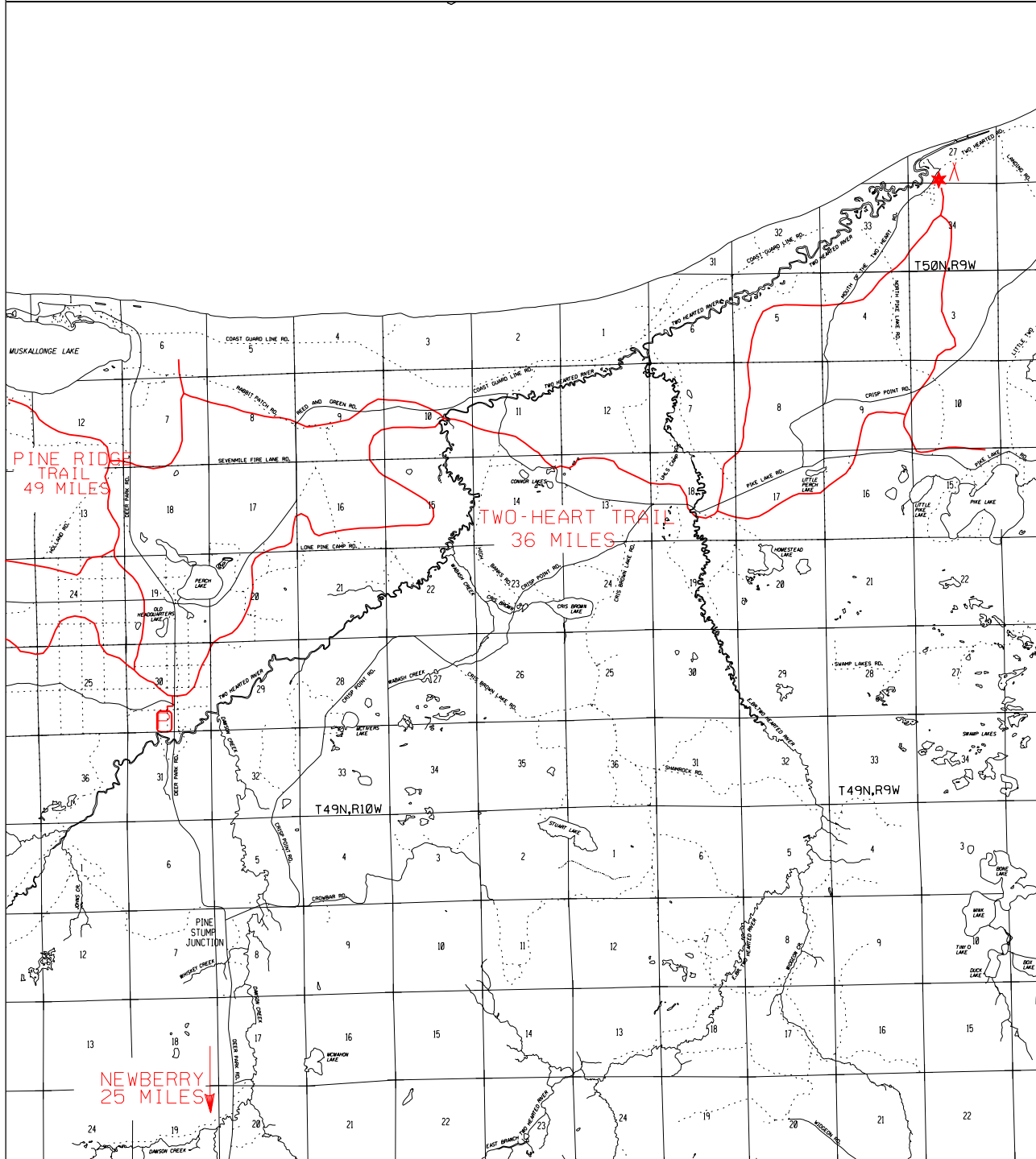


ADVISORY: Trails and Routes have two-way traffic.

DISCLAIMER: Trails shown on this map are an approximate representation of the trail system at the time of publication and may not reflect current ground conditions. STAY ON SIGNED TRAILS ONLY!

TWO-HEART TRAIL

LUCE COUNTY
FOREST MANAGEMENT DIVISION



— ORV TRAIL - for ORV's less than 50" in width - off road motorcycles and ATV's. (DNR license required)

- - - - - ORV ROUTE - for ORV's of all sizes. (DNR license required unless licensed by Secretary of State)

LEGEND

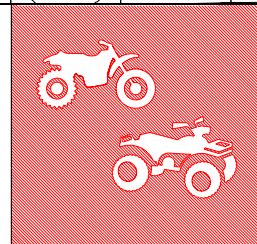
⊞ PARKING
▲ CAMPGROUND
★ GAS - FOOD

0 .5 1
SCALE IN MILES

LOCATION



MAY 2005



ADVISORY: Trails and Routes have two-way traffic.

DISCLAIMER: Trails shown on this map are an approximate representation of the trail system at the time of publication and may not reflect current ground conditions. STAY ON SIGNED TRAILS ONLY!